

MALDIVES LAND SURVEY AUTHORITY

MINISTRY OF HOUSING AND INFRASTRUCTURE
Office (PABX): +(960) 3004300, Fax: +(960) 3004254
Email: survey@housing.gov.mv
Web: www.surveyofmaldives.gov.mv,
Ameenee Magu, Maafannu, Male', 20392, Maldives.



CONTROL POINT DETAILS	Station Number	PSM 5822
Coordinate Information		
Geodetic	Grid	
WGS 84	UTM Zone 43	
Lat: 4°15'05.82289"N	E: 318933.343 m	
Long: 73°22'06.81228"E	N: 470131.279 m	
Ellp Height: -127.344	Orth Height: +1.197m	
Island Name: K.AMINGIRI (LD1761)	Date: 31st JANUARY 2021	

Monument description & method of survey:

- Monument Type A as in Technical Brief
- Stainless steel plate fixed to concrete by Four bolts
- Horizontal coordinates fixed by GNSS Static survey.
- Vertical height corrected using tide prediction data (Hulhule)
- **PSM 5822 is 20mm above ground Level**

General site condition & access:

- Easily accessible area with wide angle of sky visibility
- Located in North side of the island , service jetty (Harbor).
- Near south east corner of the quaywall platform

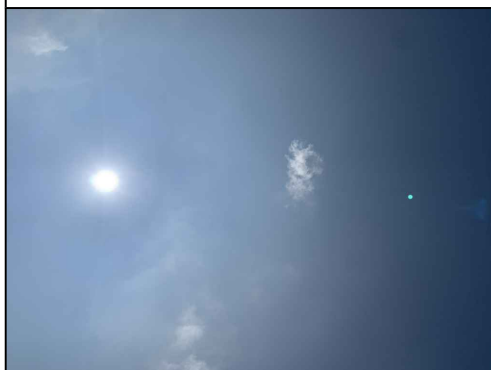
Owner: Amingiri Holdings Pvt Ltd.



Bottom

North Height 1.5m / Distance 4m

East Height 1.5m / Distance 4m



Up Height 1.5m

South Height 1.5m / Distance 4m

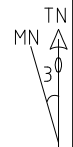
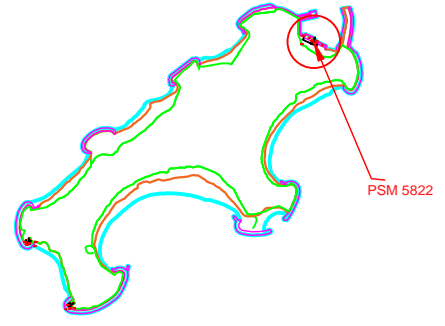
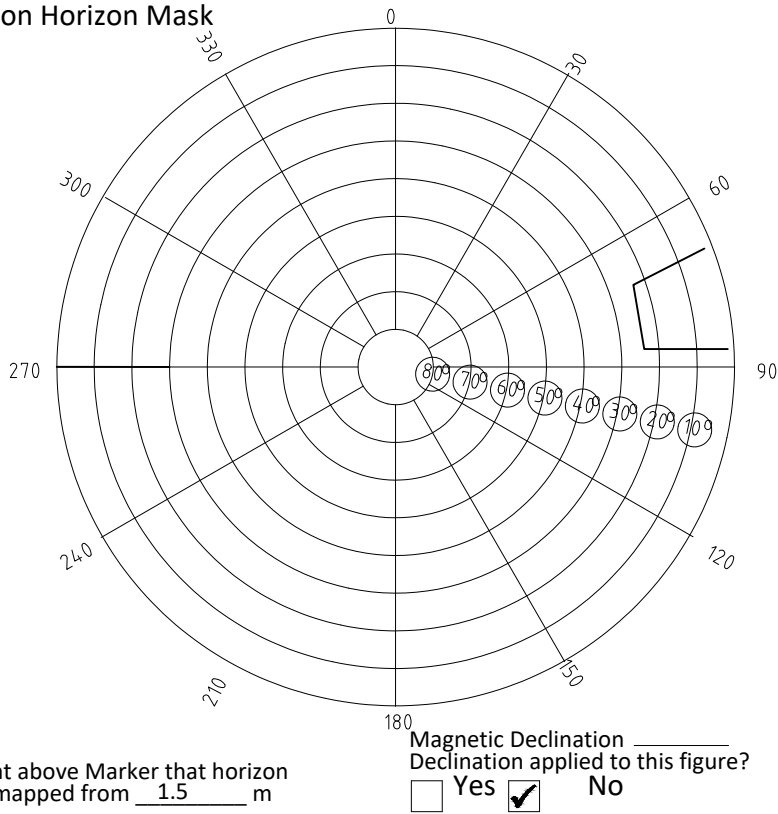
West Height 1.5m / Distance 4m

SITE INFORMATION

Station Number

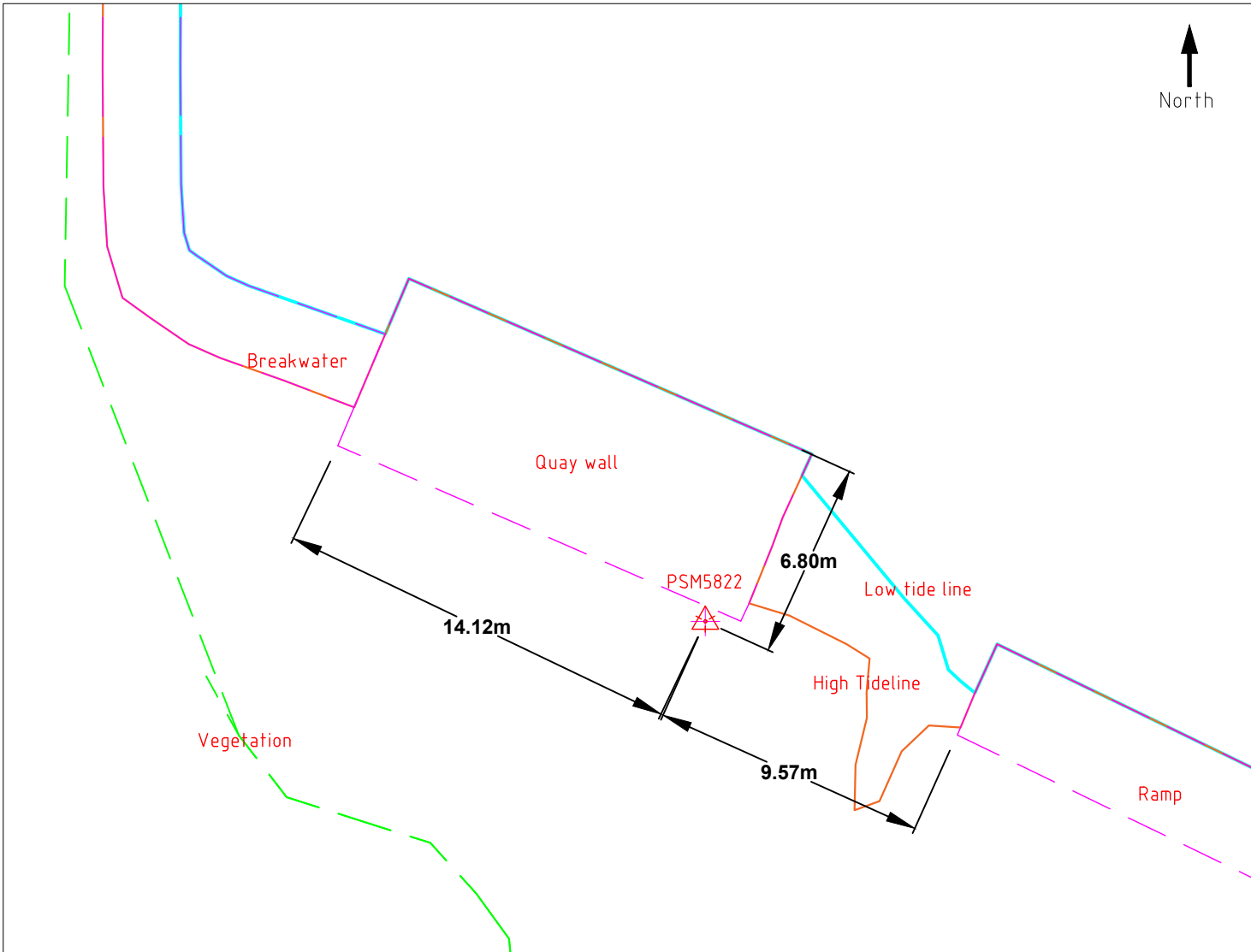
P	S	M	5	8	2	2
---	---	---	---	---	---	---

Station Horizon Mask



Height above Marker that horizon was mapped from 1.5 m

Magnetic Declination Declination applied to this figure?
 Yes No



Sketched by: Abulho

Scale: Not to Scale

Date: 21 FEBURARY 2021

MALDIVES LAND SURVEY AUTHORITY

MINISTRY OF HOUSING AND INFRASTRUCTURE
Office (PABX): +(960) 3004300, Fax: +(960) 3004254
Email: survey@housing.gov.mv
Web: www.surveyofmaldives.gov.mv,
Ameenee Magu, Maafannu, Male', 20392, Maldives.



CONTROL POINT DETAILS	Station Number	PSM 5823
Coordinate Information		
Geodetic	Grid	
WGS 84	UTM Zone 43	
Lat: 4°14'52.24253"N	E:	318548.519 m
Long: 73°21'54.36187"E	N:	469714.943 m
Ellp Height: -127.320	Orth Height:	+1.221m
Island Name: K.AMINGIRI (LD1761)	Date:	31st JANUARY 2021

Monument description & method of survey:

- Monument Type A as in Technical Brief
- Stainless steel plate fixed to concrete by Four bolts
- Horizontal coordinates fixed by GNSS Static survey.
- Elevation reduced relative to ellipsoid height difference reference to PSM 5822 which was corrected to Meanwater level by tide prediction table.
- **PSM 5823 is 50mm Above ground Level**

General site condition & access:

- Easily accessible area with wide angle of sky visibility
- Located on southern side of the island, top of the groyne head.
- Edge of the crest of rock boulder revetment.

Owner: Amingiri Holdings Pvt Ltd.



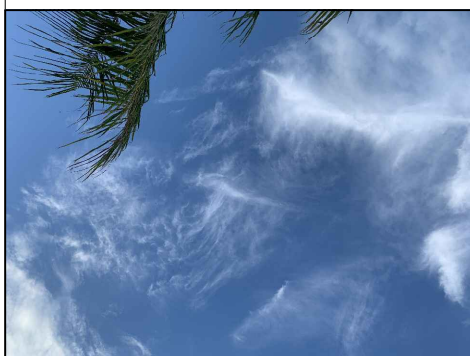
Bottom



North Height 1.5m / Distance 4m



East Height 1.5m / Distance 4m



Up Height 1.5m



South Height 1.5m / Distance 4m



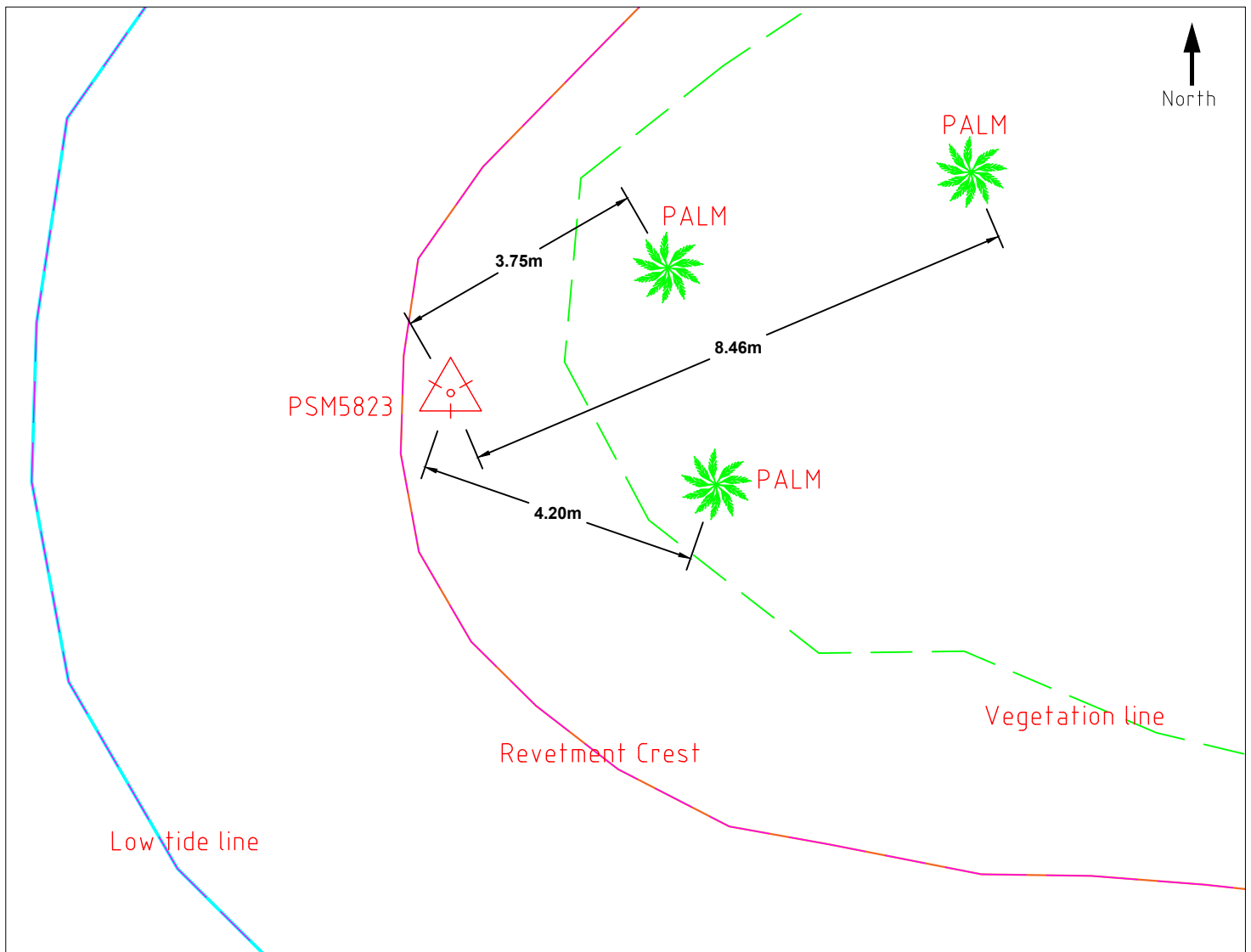
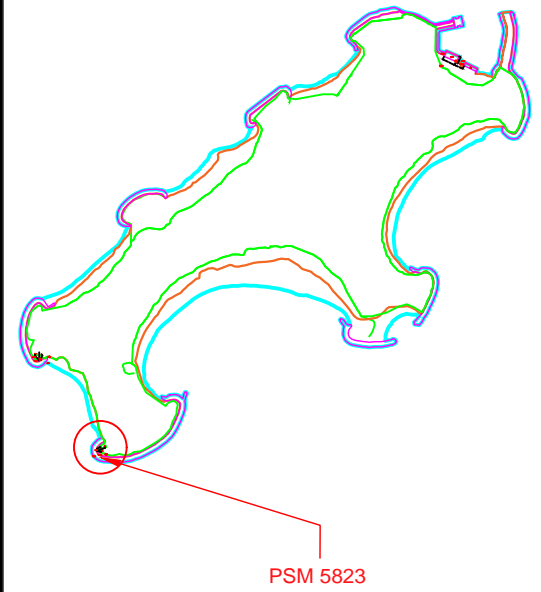
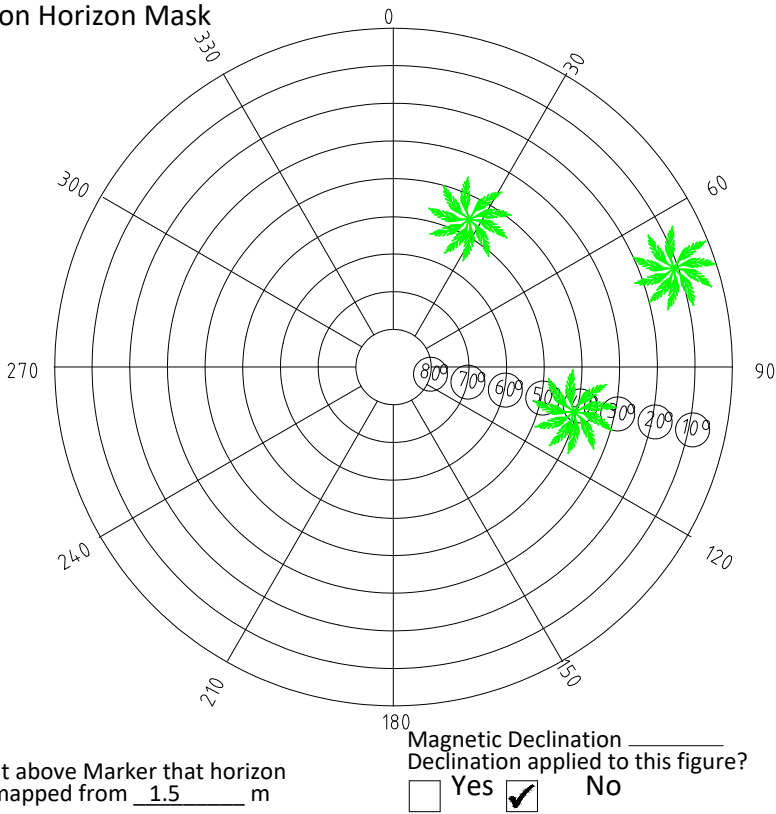
West Height 1.5m / Distance 4m

SITE INFORMATION

Station Number

P	S	M	5	8	2	3
---	---	---	---	---	---	---

Station Horizon Mask



Sketched by: Abulho

Scale: Not to Scale

Date: 21 FEBURARY 2021

MALDIVES LAND SURVEY AUTHORITY

MINISTRY OF HOUSING AND INFRASTRUCTURE
Office (PABX): +(960) 3004300, Fax: +(960) 3004254
Email: survey@housing.gov.mv
Web: www.surveyofmaldives.gov.mv,
Ameenee Magu, Maafannu, Male', 20392, Maldives.



CONTROL POINT DETAILS	Station Number	PSM 5824
Coordinate Information		
Geodetic	Grid	
WGS 84	UTM Zone 43	
Lat: 4°14'55.38690"N	E: 318486.744 m	
Long: 73°21'52.35204"E	N: 469811.660 m	
Ellp Height: -126.940	Orth Height: +1.601m	
Island Name: K.AMINGIRI (LD1761)	Date: 31st JANUARY 2021	

Monument description & method of survey:

- Monument Type A as in Technical Brief
- Stainless steel plate fixed to concrete by Four bolts
- Horizontal coordinates fixed by GNSS Static survey.
- Elevation reduced relative to ellipsoid height difference , reference to PSM 5822 which was corrected to Meanwater level by tide prediction table (Hulhule)
- **PSM 5824 is 50mm above ground Level**

General site condition & access:

- Easily accessible area with wide angle of sky visibility
- Located on most western side , top of the groyne head.(to the south side of the head)
- Edge of the crest of rock boulder revetment.

Owner: Amingiri Holdings Pvt Ltd.



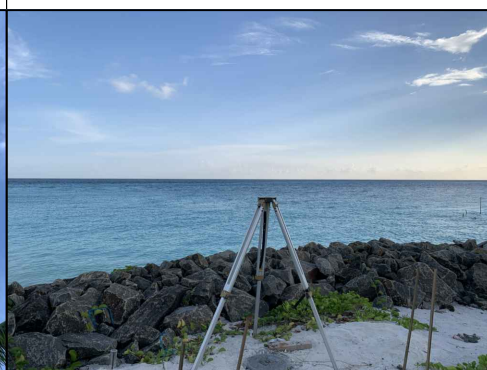
Bottom

North Height 1.5m / Distance 4m

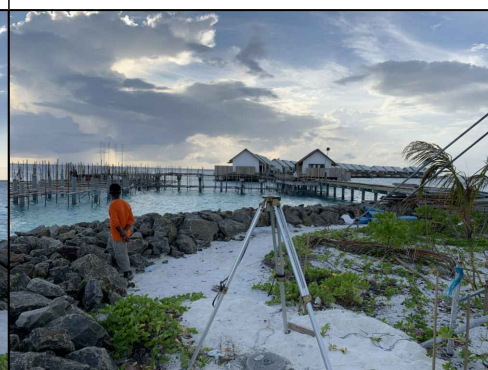
East Height 1.5m / Distance 4m



Up Height 1.5m



South Height 1.5m / Distance 4m



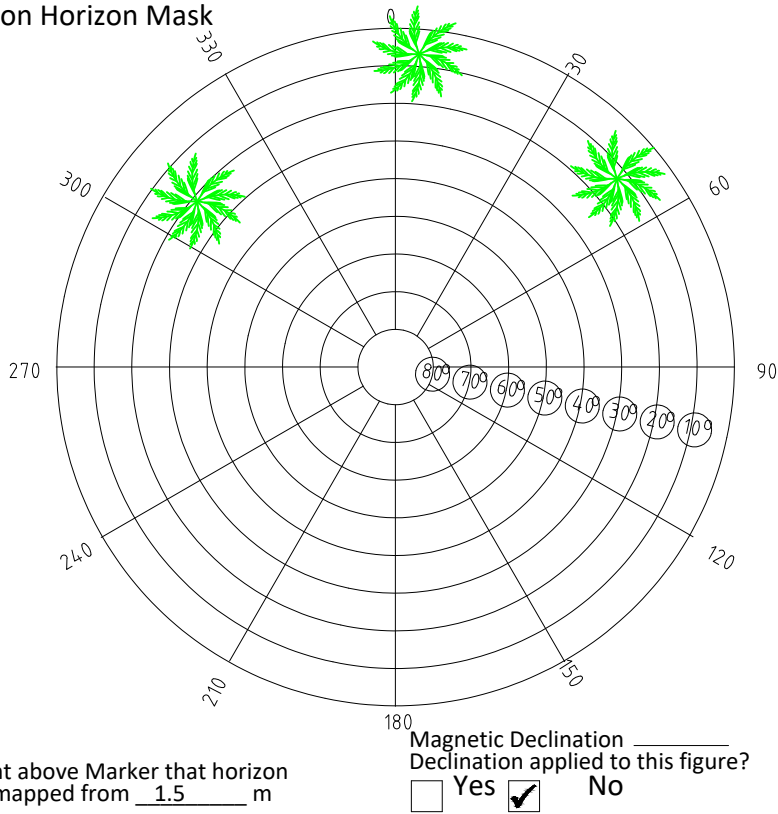
West Height 1.5m / Distance 4m

SITE INFORMATION

Station Number

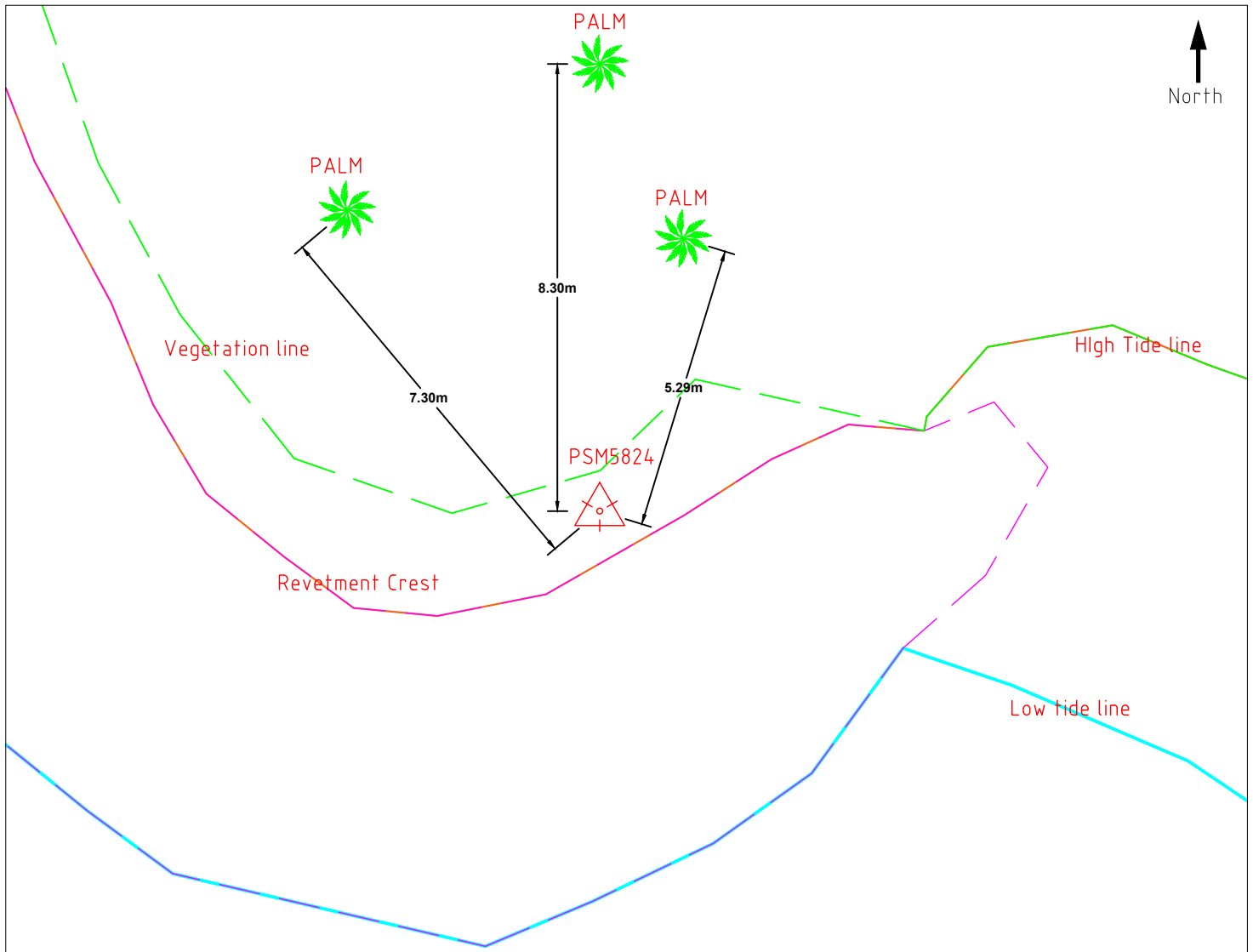
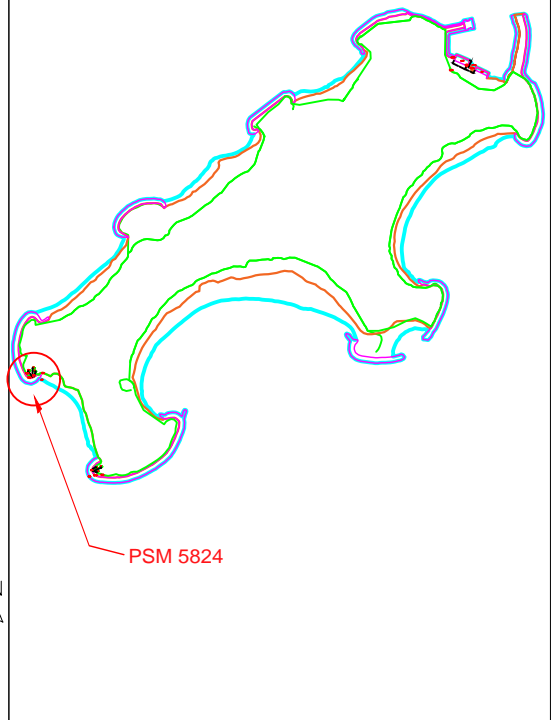
P	S	M	5	8	2	4
---	---	---	---	---	---	---

Station Horizon Mask



Height above Marker that horizon was mapped from 1.5 m

Magnetic Declination _____
 Declination applied to this figure?
 Yes No



Sketched by: Abulho

Scale: Not to Scale

Date: 21 FEBURARY 2021